

SOLUTIONS FOR AIRPORT SECTOR

Company Profile

Introduction of Our Company

We would like to introduce our self as VIRTUAL WORLD COMMUNICATIONS. is established in 2012 to focus on basics of Customers Security Surveillance Solution, IT Structure and Web Solutions. Our Company name can define the Communications between Real World to Virtual World. Our office is located in Karachi, but providing services to Major Cities of Pakistan. We provide All Services in 24 by 7 (Day & Night) and Online Support to our Customers. Our Motive is to satisfy our Client with Best Products & Services on one Call. We provide solutions to fulfill and satisfy our clients with their need

Why Choose us ?

We assure that with our state of the art and technical approach towards your needs, we will be able to make you join our growing list of satisfied customers. Assurance of providing the best customized technical solutions and services keeping in view the economic viability of our customers and supply of equipment through our global network of business associates, identify our market position.

Maintenance and Servicing Capabilities

VWC has a standard call-out procedure for each system installed with 24-hour service. VWC endeavor to respond telephonic-ally within the hour and on site within 24 hours of being notified. Qualified and trained technicians would respond to the specific project with the necessary tools and stock to attend to the fault(s), should the system require additional spares, these would be obtained within the shortest time required. Servicing of equipment is carried out by VWC in-house capabilities. VWC undertakes after sales service agreements and pride in the in-depth knowledge of its product base with central documentation for each project undertaken. Quality is an element of the attitudes of our technicians that has been carefully nurtured and is evident in the compliments received from clients.

A.I in Airport Sector

AI is transforming AirPorts by offering personalized learning experiences, automating administrative tasks, and providing new tools for both Customers and Employees . AI can detects customer's Face Expressions along with Materials, Tracking, Shipments, to avoid any accident occurs. AI also helps in Access Control System with Attendance and rest of operations smartely with Construction Workers with full Records and working capabilities.

A.I Thermal High Res Camera for Runway

Thermal Detection

- One thermal camera to monitor in total darkness, and one visible camera equipped with Starlight technology and motorized lens to capture details
- Thermal sensitivity feature captures more image details and temperature information
- Detects human and vehicle intrusion using thermal technology



A.I Thermal High Res Camera for Runway

This Camera is Thermal Network Hybrid Pan, Tilt and Zoom Camera Featuring a dual lens Pan and Tilt camera, this series provides an all-in-one solution that is especially beneficial for long distance video surveillance in outdoor applications. The series combines one thermal camera for monitoring in total darkness and one camera with Starlight functionality and a motorized lens for confirming details up close.

Uncooled Vox Technology, High Sensitivity, Fire Detection & Alarm, Auto-Tracking, Intelligent Video System

It has 30x Optical Zoom With built-in fire detection functionality, the camera has the ability to detect fires from long range. Because thermal cameras are sensitive to temperature, they provide higher fire detection accuracy than standard cameras, making them particularly fit for applications such as forest fire prevention.

IVS is a built-in video analytics algorithm that delivers intelligent functions to monitor a scene for tripwire violations, intrusion detection, and abandoned or missing objects. A camera with IVS quickly and accurately responds to monitoring events in a specific area.



A.I Thermal High Res Camera for Runway

- 4K Resolution: provides clear and vivid details of targets in terminals and its surrounding areas



4K Ultra HD Resolution (3840x2160P)

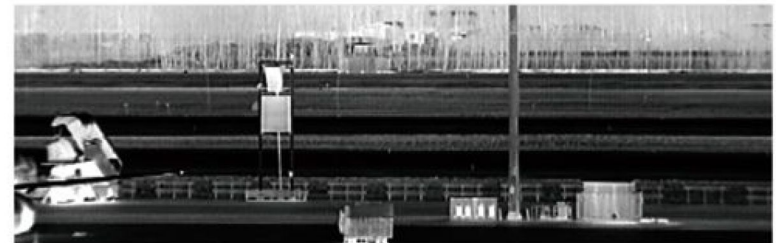


HD Resolution (1920x1080P)

- Long Distance View: covers more areas of the monitored scene



- Thermal Detection: better night images and contrast effects, making it ideal for aprons, cargo areas and perimeter of the airport



Next Gen AI Thermal Drone Camera

- For instant survey of Runway to Check any substance and clearance of runway
 - Can only be operate when all flights are down nor on route
 - Use as per Law of Civil Aviation Authority
- Can be able to Control from DG 's Dark Room or Specified Dark Room (Control Room)

Next Gen AI Thermal Drone Camera

Benefits of Use:

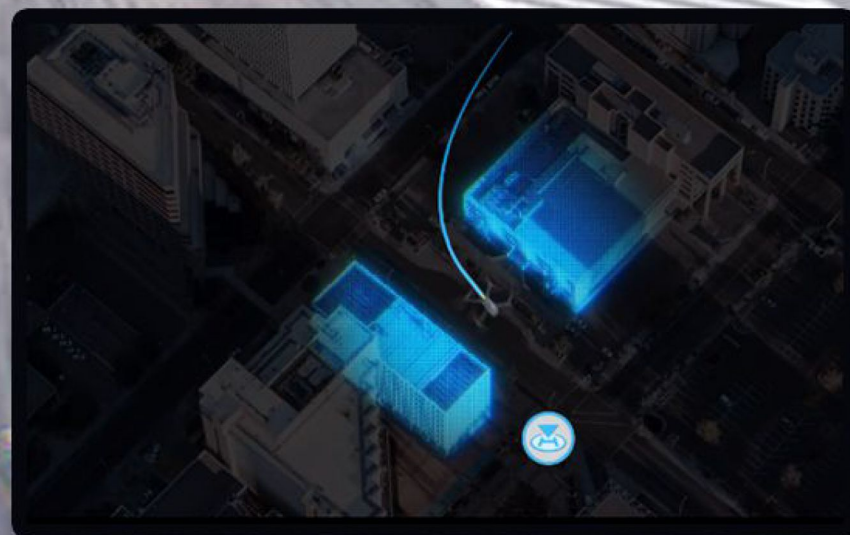
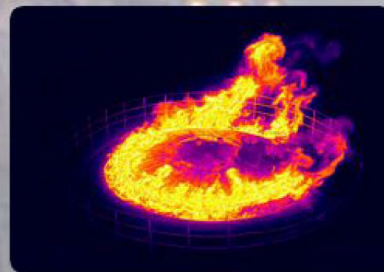
It can do **Survey with Speed** with 20MP sensor has a mechanical shutter to prevent motion blur and supports rapid 0.7-second interval shooting. Complete mapping missions with extraordinary efficiency without the need for Ground Control Points.

See the Unseen thermal camera has 640×512 resolution and supports point and area temperature measurement, high temperature alerts, color palettes, and isotherms to help you find your targets and make quick decisions.

Simultaneous Split-Screen Zoom thermal and zoom cameras support 28× continuous side-by-side zoom for easy comparisons.

Max Flight Time 45-min flight durations let you cover more ground each mission, for surveying of up to **2 square kilometers** in a single flight

Advanced RTH automatically plans the optimal route home, saving power, time, and hassle.



Next Gen AI Thermal Drone Camera

Benefits of Use:

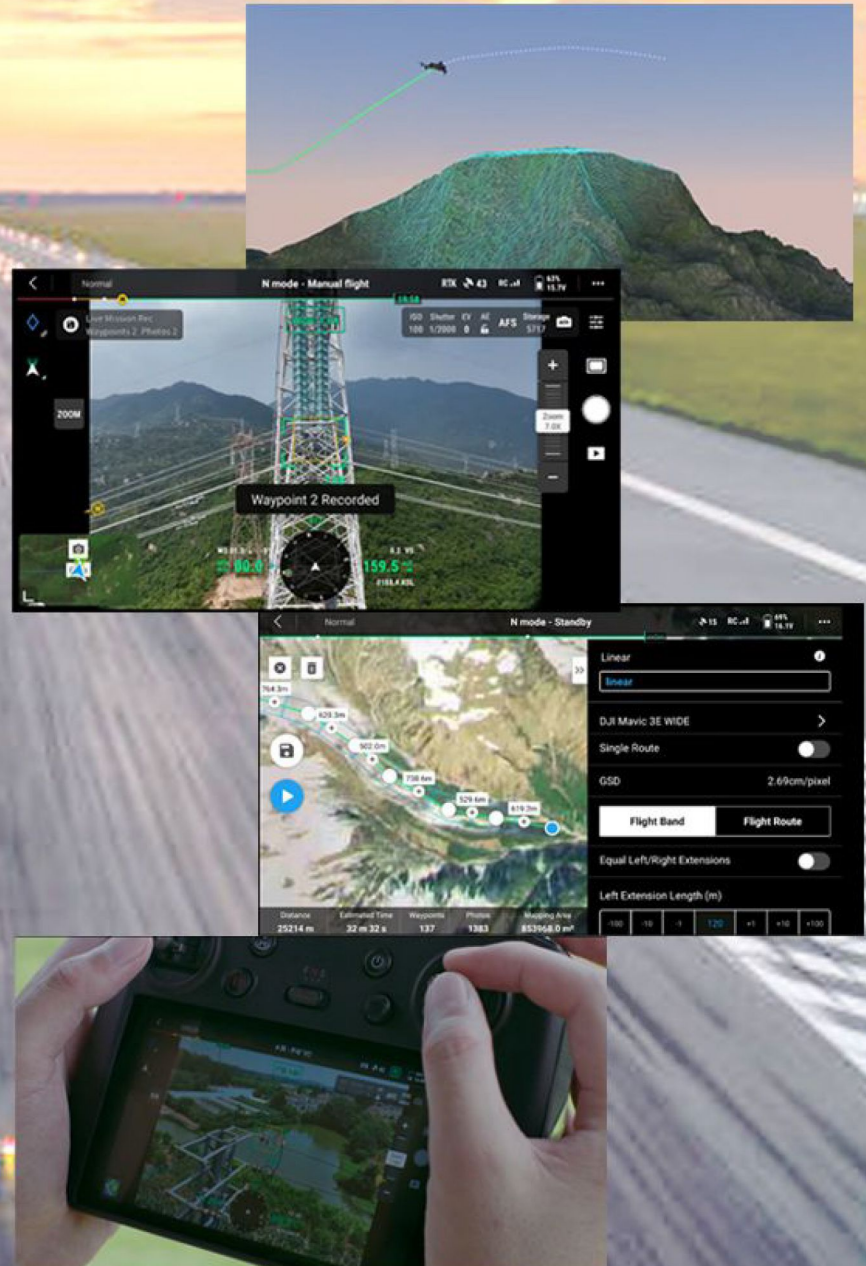
Real-Time Terrain Follow Automatically adjust altitude when mapping areas with variations in elevation, all without needing to import external elevation data with omnidirectional sensing.

Live Mission Recording Record mission actions such as **aircraft movement**, gimbal orientation, photo shooting, and zoom level to create sample mission files for future automated flights.

Corridor Mission Planning Create automated flight missions of highways, rivers, oil pipelines, and more with Corridor Mission Planning. Simply draw a line on the map and it divides the area into mappable segments for straightforward surveying

Focus and Find These Drones are equipped with a 12MP Zoom Camera, supporting up to 56x Max Hybrid Zoom to see essential details from afar.

Omnidirectional Sensing for Safe Flying APAS 5.0 enables automatic rerouting around obstacles, so you can fly with peace of mind.



A.I Intelligent Walk Through Weapon Detection Gate

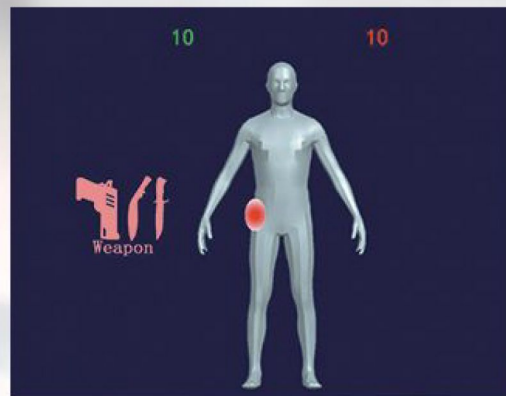
For Normal Security Checking with AI Technology Feature

Security Check Point Solution



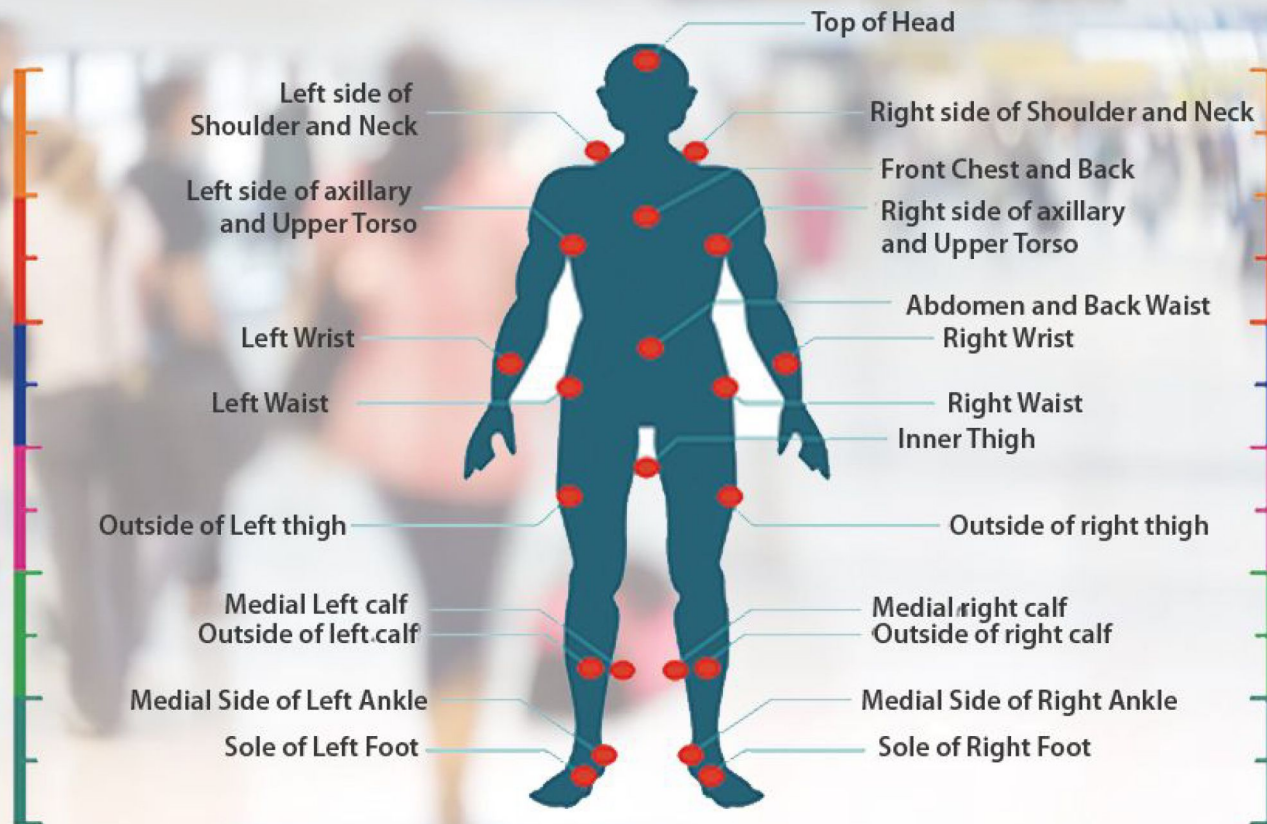
A.I Security Check Points

The Intelligent Walk-Through Weapon Detection System (IMDS) is a cutting-edge solution designed for rapid and accurate screening of individuals, even those carrying backpacks, purses, and bags, for the detection of various metal threats. This includes regulated knives, firearms, containers for flammable and explosive substances, pipes and other prohibited metal items.



A.I Security Check Points

The IMDS provides high-accuracy weapon detection while minimizing false alarms, making it ideal for securing public spaces, events, and facilities. Its modular design and robust feature set ensure adaptability to a wide range of security needs.



Schematic Diagram of Alarm Location Division



Products & Services

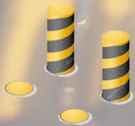
- * **ACCESS CONTROL SYSTEM** - Door Access Control System to control the access and records of employees with limitations assigned as designations
- * **ATTENDANCE MACHINES** - Employee Attendance System to Record attendance of Employees Centralized for All Branches
- * **BURGLAR ALARM SYTEM** - Wifi, GSM Mobile Supported Alarm System Generates Notifications & Alarm Control Room in Seconds Automatically
- * **CCTV CAMERAS** - AI CCTV Surveillance System Record Attendance, Capture all the Moments View Online
- * **FIRE ALARM SYSTEM** - A.I Fire Fighting System Fire Fighting & Alarming Devices with Extinguishers
- * **WALKTHROUGH GATE** - Metal Detector for Gate Scan Metal Detection at the Gate for Security



Products & Services



* **PARKING MANAGEMENT SYSTEM** - Parking Barriers



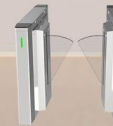
* **ROAD BLOCKERS** - Surface Blockers & Bollards



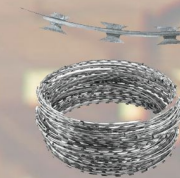
* **TYRE KILERS** - Road Spikes, Tyre Busters



* **TURNSTILES** - Waist Height & Full Height Turnstiles



* **FLAP BARRIERS** - Swing Barriers



* **FENCING SYSTEM** - Electric Fencing, Razor Wire



Smart Suspicious Check Point

If you founds any person suspicious then for Clear Screening we will move that person to the Most Advance Full Body X-Ray Screening System

Advance People X-ray Screening System for Suspects

X-ray people screening systems are security technologies that use X-ray technology to produce images of a person's body to detect potential threats or contraband that may be concealed on or in the person's body.

These systems are designed to be safe for the person being screened, and they use advanced imaging technology that minimizes the dose of radiation to which the person is exposed.

People screening systems provide an essential tool for enhancing the safety and security of high-risk environments and can help to prevent potentially dangerous individuals or items from entering secure areas. These systems are critical in locations such as prisons, airports, courthouses, government buildings, and other high-risk areas with a risk of terrorist attacks, criminal activity, or other security threats.



Advance People X-ray Screening System for Suspects

Xray Screening System allow the detection of all types of **dangerous threats**, including **drugs, weapons**, and **explosives concealed** on the human body, inside it or even hidden in the **prosthetic devices** much more effective and efficient in comparison with the ordinary metal detectors of competitive systems.

The Most Important :

Today when **Terrorists** use more and more sophisticated techniques and means such as nonmetallic weapons, plastic and liquid explosives, and when drug dealers use human bodies as containers for drug transportation, the security systems must be enhanced by the latest technologies and solutions.



A.I X-ray Cargo & Baggage Scanner

The AI Xray Scanner is a high-resolution, dual view X-ray baggage inspection system with the ability to automatically detect prohibited objects and threats.

The dual-view system means that the operator can simultaneously view two separate images (in perpendicular orientation), thus giving a more complete view of the object being scanned and reducing the need for repositioning and rescanning. This enables rapid, accurate and comprehensive threat detection.

Automatic identification

Suspicious objects (drugs, explosives) automatic detecton and identification

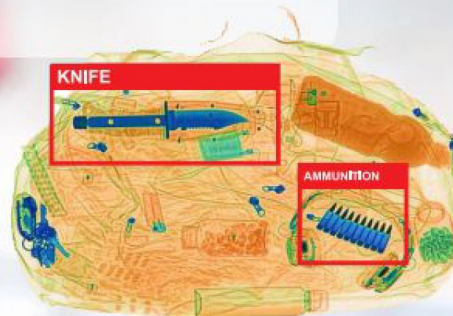
Color palette

Availability of 7, 3 colour and infinite colour palettes for X-ray images

Dual-view technology

The operator can simultaneously view two separate images (in perpendicular orientation)

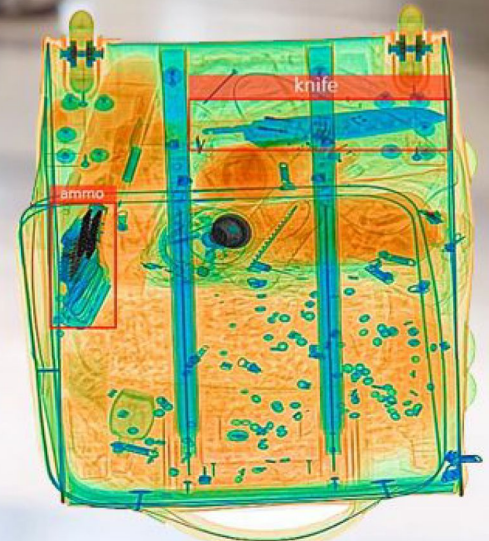
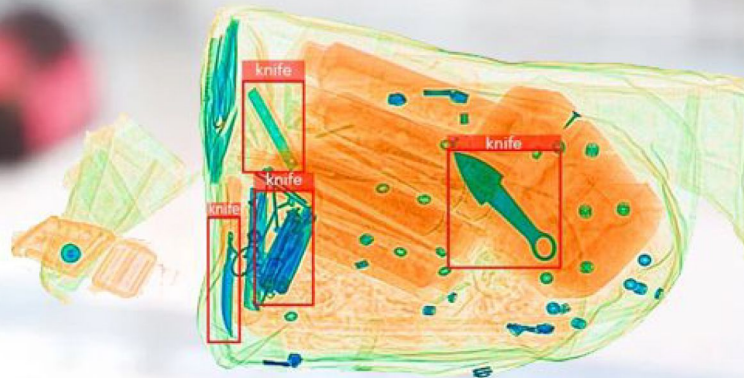
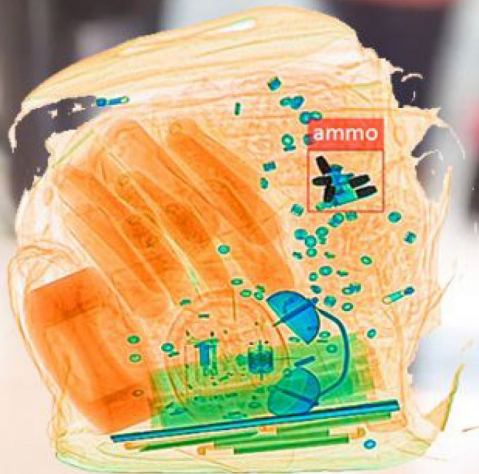
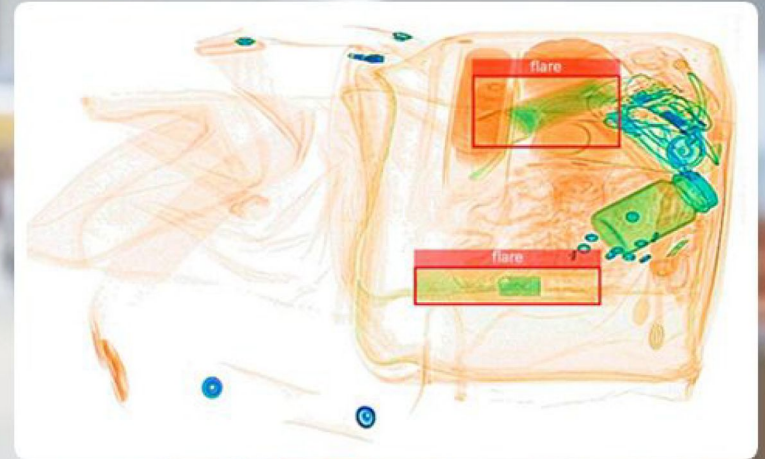
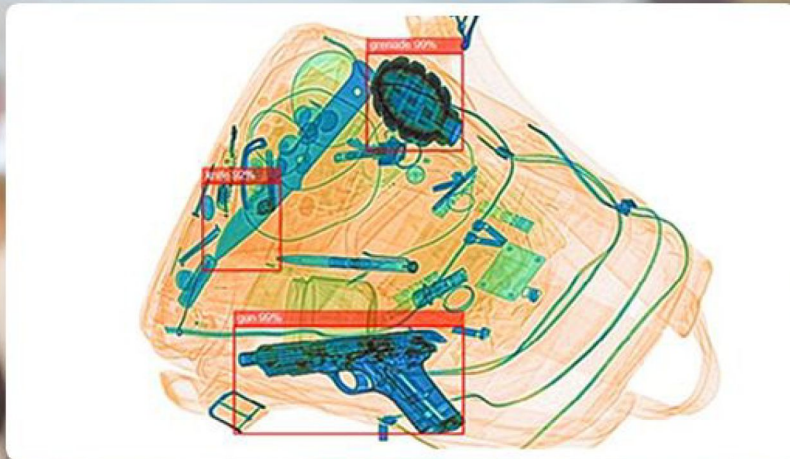
A.I Smart Detection Feature



A.I X-ray Cargo & Baggage Scanner

Our proprietary software A-EYE is an Artificial Intelligence system intended for the automated identification of firearms, firearm components, ammunition, grenades, knives, and brass knuckles. The detection algorithm is an embedded part of our baggage inspection systems.

The automatic detection solution is built using real threat objects that could be expected at events and locations such as theme parks, concerts, sporting events, schools, or other venues which may require security checkpoints.



Products & Services



* **EXPLOSIVE DETECTORS** - Explosive Detectors & Metal Detectors



* **UVIS** - UVSS - Under Vehicle Inspection & Surveillance System



* **X-ray Baggage Scanner** - Cargo Inspection System

Products & Services

- * **HR360-MOBILE** Attendance With Actual Location
Attendance from Mobile & Payroll System
- * **FEEDBACK360** – Customer Feedback Cloud Application
Customer Feedback & Views about your Business
- * **SMART CANTEEN360** - Canteen Management System
Canteen & Cafe (POS) to Record all the Regular & Other Meals
- * **CONSTRUCTION360** - Cloud Construction Management System
Costing, Manage Project Progress with Materials, Workers and Resources
- * **ALERT360** - Centralized Alert Management System
Realtime Alerts and Notifications for Security Systems



HR360-Mobile Attendance
Attendance & Payroll Software with Actual Location



**CLOUD
FEEDBACK360**
MANAGEMENT SYSTEM

SMART
CANTEEN360-



**CLOUD
CONSTRUCTION360**
Construction Management System



ALERT360
Alert Management System

Products & Services

* **DRIVER360** - Driver Management System

Captures Realtime Logs of Material Vehicles Along with Location



* AI Tools for Transport Sectors

AI Face Detection in Transportation, Tasks, Generating Mails, Detections of Theft & Activities

AI

DISPLAY KIOSK

with Different Types of Usage, like Real Estate or Projects Marketing, Information Counters, Self Appointments, Generation of Reports etc.



* **MAINTENANCE360** - Maintenance Management System

Record & Auto Notify about Equipements & Services Alerts



* **GUARD360** - Cloud Guard Patrol System

Monitoring Security Guards with their Patrolling Areas and other Employees



Products & Services

- * **QMS360** - Cloud Queue Management System
Queue with Software Base Kiosk along with Counters Calling Records Centralized
- * **VVMS360** - Cloud Vehicle & Visitors Management System
Control the Unauthorized Visits in Apartments, Societies, Hospitals, Schools, Universities & Rest of Other Private/Government Premises.
- * **SMARTi360** - Cloud Smart Inventory System
Real-time Inventory, Detection of Supply to avoid Theft, Demand Forecasting etc
- * **RIDER360** - Cloud Mobile Attendance System with Location & Pictures
Real-time Location Detection along with Front Camera Auto Picture with Time Stamp Fixed
- * **SVS360** - Smart Verification System
Visitors Instantly Verified to void any mishaps at any Public, Government or Private Places
- * **TOLL360** - Cloud Toll Collection System
Combination of Technology & Techniques to help you Realtime Centrally Manage Toll Operations



* **CARGO360** - Cargo Tracking Management System
Booking, Track, Records of Couriers & Shipments with Complete Reportings



* **FORKLIFT360** - Cloud Forklift Alert System
Detects Human Being & Any Substance in Range of Forklift, Maintain Records of Usage



* **CONTAINERS360** - Security Systems for Sealed Containers
Alerts, Realtime Locations, Sealed Broken Alerts System from Cloud



* **VIEW360** - Cloud Vehicle Surveillance System
Monitor Drivers and Complete Vehicle from Control Room Online



CONTACT INFORMATION

Karachi - Sales Branch

Outlet#. 18, 19, Ground Floor
Meezan Luxury Hotel, Passport Office
Saddar, Karachi

Lahore - Region Office

Office #. 335, block H3
Johar Town Lahore

Islamabad - Region Office

Office#. 51-52, Gakhar Plaza
Bhara Kahu, Islamabad

NTN: 4042405-7
SNTN: S4042405-7

Head Office

Office #.16, 6th Floor
Rimpa Plaza, M.A. Jinnah Road
Saddar, Karachi
Pakistan

Tel : +92(021)32762827

Email us at
info@virtualworldcommunications.com